



Závěsná oka
Eye bolts and nuts

Šroub závěsný DIN 580

povrch: galvanický zinkochromát (bílý) > 8µm
materiál: ocel C15E, pevn.tř.4.8, Re 250-300MPa

Eye bolt DIN 580

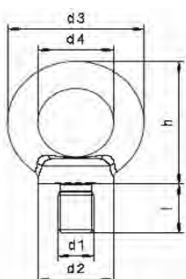
finish: galvanized > 8µm
material: forged steel C15E



Kód Art. No.	d1 mm	d3 mm	d4 mm	l mm	nosnost kg		kg/100ks kg/100pcs	ks pcs	ks pcs
					WLL 0°	45°			
4580.06	M6	36	20	13	70	50	5,5	25	500
4580.08	M8	36	20	13	140	95	6,0	25	500
4580.10	M10	45	25	17	230	170	11,0	20	250
4580.12	M12	54	30	20	340	240	18,0	15	150
4580.14	M14	63	35	27	340	240	26,0	10	100
4580.16	M16	63	35	27	700	500	28,0	10	80
4580.20	M20	72	40	30	1200	830	45,0	5	50
4580.24	M24	90	50	36	1800	1270	74,0	1	30
4580.30	M30	108	60	45	3600	2800	166,0	1	15
4580.36	M36	126	70	54	5100	3700	265,0	1	10
4580.42	M42	144	80	63	7000	5000	403,0	1	5
4580.48	M48	165	90	68	8600	6100	638,0	1	3

materiál: nerezavějící ocel A4

material: stainless steel AISI 316



Kód Art. No.	d1 mm	d3 mm	d4 mm	l mm	nosnost kg		kg/100ks kg/100pcs	ks pcs	ks pcs
					WLL 0°	45°			
9580.08	M8	36	20	13	140	95	6,0	10	200
9580.10	M10	45	25	17	230	170	11,0	10	100
9580.12	M12	54	30	20	340	240	18,0	1	100
9580.16	M16	63	35	27	700	500	28,0	1	50
9580.20	M20	72	40	30	1200	830	45,0	1	50
9580.24	M24	90	50	36	1800	1270	74,0	1	25

bezpečnostní faktor 6

safety factor 6

Matice závěsná DIN 582

povrch: galvanický zinkochromát (bílý) > 8µm
materiál: ocel C15E, pevn.tř.4.8, Re 250-300MPa

Eye nut DIN 582

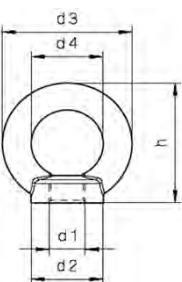
finish: galvanized > 8µm
material: forged steel C15E



Kód Art. No.	d1 mm	d3 mm	d4 mm	h mm	nosnost kg		kg/100ks kg/100pcs	ks pcs	ks pcs
					WLL 0°	45°			
4582.06	M6	36	20	36	70	50	5,0	25	500
4582.08	M8	36	20	36	140	95	5,0	25	500
4582.10	M10	45	25	45	230	170	9,0	20	250
4582.12	M12	54	30	53	340	240	16,0	15	150
4582.14	M14	63	35	62	340	240	24,0	10	100
4582.16	M16	63	35	62	700	500	24,0	10	80
4582.20	M20	72	40	71	1200	830	36,0	5	50
4582.24	M24	90	50	90	1800	1270	72,0	1	30
4582.30	M30	108	60	109	3600	2800	132,0	1	15
4582.36	M36	126	70	128	5100	3700	208,0	1	10
4582.42	M42	144	80	147	7000	5000	311,0	1	5
4582.48	M48	165	90	168	8600	6100	502,0	1	3

materiál: nerezavějící ocel A4

material: stainless steel AISI 316



Kód Art. No.	d1 mm	d3 mm	d4 mm	h mm	nosnost kg		kg/100ks kg/100pcs	ks pcs	ks pcs
					WLL 0°	45°			
9582.08	M8	36	20	36	140	95	5,2	10	200
9582.10	M10	45	25	45	230	170	9,4	10	100
9582.12	M12	54	30	53	340	240	16,0	1	100
9582.16	M16	63	35	62	700	500	24,0	1	50
9582.20	M20	72	40	71	1200	830	35,2	1	50
9582.24	M24	90	50	90	1800	1270	70,6	1	25

bezpečnostní faktor 6

safety factor 6