



Třmeny
Shackles

Třmen typu "D"

povrch: galvanický zinkochromát (bílý) > 8µm
materiál: ocel S235JR, pevn.tř.4.6, Re 235MPa

Shackle dee type

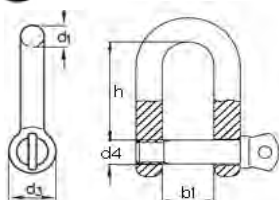
*finish: galvanized > 8µm
 material: forged steel St37-2*



Kód Art. No.	d ₁ mm	d ₄ mm	d ₃ mm	b ₁ mm	h mm	nosnost WLL kg	kg/100ks kg/100pcs	ks pcs	ks pcs
4447.05	5	5	10	10	20	80	1,5	50	1 500
4447.06	6	6	12	12	24	120	2,5	50	1 000
4447.08	8	8	16	16	32	200	5,5	50	400
4447.10	10	10	20	20	40	320	11,0	50	200
4447.11	11	11	22	22	44	400	14,0	25	150
4447.12	12	12	24	24	48	500	19,0	20	100
4447.14	14	14	28	28	56	650	32,0	10	80
4447.16	16	16	32	32	64	800	42,0	10	50
4447.19	19	19	38	38	76	1100	85,0	5	25
4447.22	22	22	44	44	88	1500	124,0	1	20
4447.25	25	25	50	50	100	2000	183,0	1	15
4447.28	28	28	56	56	112	3000	255,0	1	10
4447.32	32	32	64	64	128	4000	378,0	1	5
4447.38	38	38	76	76	152	5000	621,0	1	4

materiál: nerezavějící ocel A4

material: stainless steel AISI 316



Kód Art. No.	d ₁ mm	d ₄ mm	d ₃ mm	b ₁ mm	h mm	nosnost WLL kg	kg/100ks kg/100pcs	ks pcs	ks pcs
9447.04	4	4	9	9	14	120	0,7	10	100
9447.05	5	5	11	18	18	200	1,5	10	100
9447.06	6	6	12	12	22	280	2,6	10	100
9447.08	8	8	16	16	32	560	5,8	5	50
9447.10	10	10	22	22	40	860	11,4	5	50
9447.12	12	12	24	24	48	1150	19,5	1	25
9447.16	16	16	32	32	64	2200	42,0	1	20

Třmen typu "Omega"

povrch: galvanický zinkochromát (bílý) > 8µm
materiál: ocel S235JR, pevn.tř.4.6, Re 235MPa

Shackle bow type

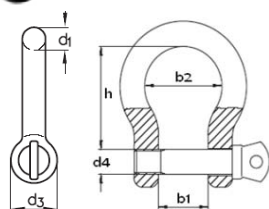
*finish: galvanized > 8µm
 material: forged steel St37-2*



Kód Art. No.	d ₁ mm	d ₄ mm	d ₃ mm	b ₂ mm	h mm	nosnost WLL kg	kg/100ks kg/100pcs	ks pcs	ks pcs
4448.05	5	5	10	15	20	80	1,6	50	1 500
4448.06	6	6	12	18	24	120	2,6	50	1 000
4448.08	8	8	16	24	32	200	5,6	50	400
4448.10	10	10	20	30	40	320	11,3	25	200
4448.11	11	11	22	33	44	400	14,7	25	150
4448.12	12	12	24	36	48	500	20,0	20	100
4448.14	14	14	28	42	56	650	34,0	10	70
4448.16	16	16	32	48	64	800	47,0	5	50
4448.19	19	19	38	60	76	1100	93,0	5	25
4448.22	22	22	44	66	88	1500	136,0	1	20
4448.25	25	25	50	75	100	2000	197,0	1	15
4448.28	28	28	56	84	112	3000	275,0	1	10
4448.32	32	32	64	96	128	4000	403,0	1	5
4448.38	38	38	76	114	152	5000	653,0	1	4

materiál: nerezavějící ocel A4

material: stainless steel AISI 316



Kód Art. No.	d ₁ mm	d ₄ mm	d ₃ mm	b ₂ mm	h mm	nosnost WLL kg	kg/100ks kg/100pcs	ks pcs	ks pcs
9448.04	4	4	8	12	16	120	0,8	10	100
9448.05	5	5	10	15	20	200	1,6	10	100
9448.06	6	6	12	18	24	280	2,7	10	100
9448.08	8	8	16	24	32	560	6,0	5	50
9448.10	10	10	20	30	40	860	12,1	5	50
9448.12	12	12	26	36	48	1150	20,3	1	25
9448.16	16	16	32	48	64	2200	46,0	1	20

bezpečnostní faktor 4 (není určen ke zdvihání břemen nad prostory s pohybem osob)

safety factor 4 (not for overhead lifting)

Třmen vysokopevnostní, typ D

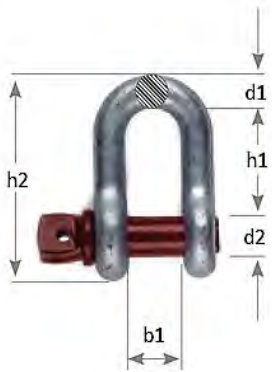
povrch: žárově pozinkovaný > 40µm

materiál: ušlechtilá ocel C45E, pevn.tř.6.8, Re 450-600MPa

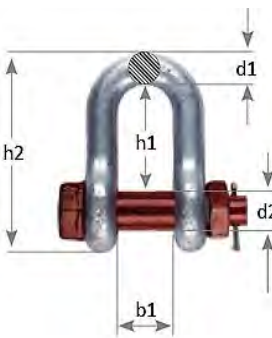
High tensile dee shackle

finish: hot dipped galvanized > 40µm

material: high tensile steel Ck45



Kód Art. No.	d1 mm	d2 mm	b1 mm	h1 mm	h2 mm	nosnost WLL kg	kg/100ks kg/100pcs	ks pcs	ks pcs
4450.06	6	8	12	22	40	500	4,5	1	500
4450.08	8	10	13	26	49	750	7,8	1	250
4450.10	10	11	17	31	59	1000	12,5	1	150
4450.11	11	13	19	36	68	1500	17,0	1	100
4450.13	13	16	21	41	77	2000	25,0	1	60
4450.16	16	19	27	51	95	3250	53,0	1	40
4450.19	19	22	32	60	116	4750	96,0	1	25
4450.22	22	25	37	71	135	6500	145,0	1	15
4450.25	25	28	43	81	150	8500	210,0	1	10
4450.28	28	32	46	90	172	9500	295,0	1	5



Kód Art. No.	d1 mm	d2 mm	b1 mm	h1 mm	h2 mm	nosnost WLL kg	kg/100ks kg/100pcs	ks pcs	ks pcs
4452.13	13	16	30	41	77	2000	34,0	1	50
4452.16	16	19	38	51	95	3250	62,0	1	30
4452.19	19	22	46	60	115	4750	106,0	1	20
4452.22	22	25	53	71	135	6500	162,0	1	15
4452.25	25	28	60	81	151	8500	235,0	1	10
4452.28	28	32	68	90	172	9500	320,0	1	5
4452.32	32	35	76	100	190	12000	450,0	1	4
4452.35	35	38	84	113	210	13500	600,0	1	3
4452.38	38	41	92	124	230	17000	800,0	1	2
4452.44	44	51	106	146	279	25000	1350,0	1	1
4452.51	51	57	122	171	324	35000	2000,0	1	1

Třmen vysokopevnostní, typ Omega

povrch: žárově pozinkovaný > 40µm

materiál: ušlechtilá ocel C45E, pevn.tř.6.8, Re 450-600MPa

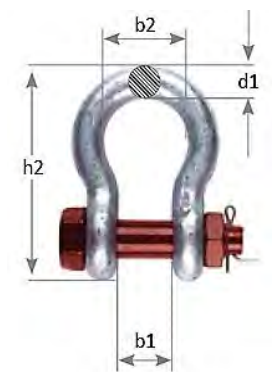
High tensile bow shackle

finish: hot dipped galvanized > 40µm

material: high tensile steel Ck45



Kód Art. No.	d1 mm	d2 mm	b1 b2 mm	h1 mm	h2 mm	nosnost WLL kg	kg/100ks kg/100pcs	ks pcs	ks pcs
4451.06	6	8	12 20	29	47	500	4,9	1	500
4451.08	8	10	13 21	32	53	750	8,5	1	250
4451.10	10	11	17 26	37	63	1000	14,0	1	150
4451.11	11	13	19 30	43	78	1500	19,5	1	100
4451.13	13	16	21 33	48	83	2000	28,5	1	60
4451.16	16	19	27 43	60	106	3250	60,0	1	40
4451.19	19	22	32 51	71	126	4750	104,0	1	25
4451.22	22	25	37 58	84	148	6500	160,0	1	15
4451.25	25	28	43 68	95	167	8500	230,0	1	10
4451.28	28	32	46 74	108	190	9500	325,0	1	5



Kód Art. No.	d1 mm	d2 mm	b1 mm	b2 mm	h2 mm	nosnost WLL kg	kg/100ks kg/100pcs	ks pcs	ks pcs
4453.13	13	16	21	33	41	2000	36,0	1	50
4453.16	16	19	27	43	51	3250	70,0	1	30
4453.19	19	22	32	51	60	4750	117,0	1	20
4453.22	22	25	37	58	71	6500	174,0	1	15
4453.25	25	28	43	68	81	8500	260,0	1	10
4453.28	28	32	46	74	90	9500	355,0	1	5
4453.32	32	35	52	82	100	12000	500,0	1	4
4453.35	35	38	57	92	113	13500	680,0	1	3
4453.38	38	41	60	98	124	17000	900,0	1	2
4453.44	44	51	73	127	146	25000	1500,0	1	1
4453.51	51	57	83	146	171	35000	2200,0	1	1

bezpečnostní faktor 6 (zkušební zatížení 2 x WLL, mezní 6 x WLL)

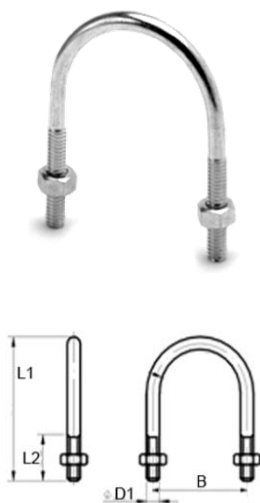
safety factor 6 (proof load 2 x WLL, ultimate 6 x WLL)

Třmen potrubní ETR

U - Bolt

povrch: galvanický zinkochromát (bílý) > 8µm
materiál: ocel S275JR, pevn. tř. 5.6, Re 275MPa

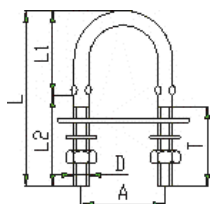
finish: galvanized > 8µm
material: forged steel St 44-2



Kód Art. No.	D1	L1 mm	L2 mm	B mm	palce inch	rozsah range mm	kg/100ks kg/100pcs	ks pcs	ks pcs
5120.020	M6	32	20	20	1/4"	8-13	1,57	100	1 500
5120.025	M6	38	20	25	3/8"	12-17	1,82	100	1 200
5120.030	M6	45	30	30	1/2"	15-21	2,10	100	1 000
5120.035	M8	60	30	35	3/4"	20-27	4,30	100	500
5120.042	M8	67	30	42	1"	26-34	5,45	100	500
5120.056	M8	76	35	56	1 1/4"	33-42	6,25	50	300
5120.057	M8	82	35	57	1 1/2"	40-49	6,60	50	300
5120.071	M8	90	35	71	2"	50-60	7,45	50	300
5120.083	M10	105	40	83	2 1/4"	60-70	14,00	50	150
5120.090	M10	117	45	90	2 1/2"	66-76	15,30	25	150
5120.093	M10	120	45	93	2 3/4"	70-82	15,50	25	150
5120.100	M10	123	45	100	3"	80-90	16,10	25	150
5120.118	M12	155	50	118	3 1/2"	90-102	28,50	20	80
5120.121	M12	160	55	121	3 3/4"	100-108	29,30	20	80
5120.135	M12	160	55	135	4"	102-114	29,80	20	80
5120.142	M12	170	55	142	4 1/2"	121-127	31,50	15	60
5120.145	M12	180	65	145	4 3/4"	126-133	32,80	15	60
5120.157	M14	190	70	157	5"	131-140	47,90	10	50
5120.170	M14	200	70	170	5 1/4"	143-153	50,40	5	40
5120.175	M14	208	70	175	5 1/2"	150-159	53,20	5	30

materiál: nerezavějící ocel A4

material: stainless steel AISI 316



Kód Art. No.	D	A	L	L1	L2	kg/100ks kg/100pcs	ks pcs	ks pcs
9120.046	4	30	60	25	35	1,8	10	100
9120.056	5	30	60	25	35	2,4	10	100
9120.066	6	30	60	25	35	3,6	10	100
9120.069	6	30	90	35	55	3,9	10	100
9120.088	8	35	80	35	45	8,1	5	50
9120.090	8	35	100	40	60	8,7	5	50
9120.113	10	50	130	55	75	13,0	1	50